



MASCA

FIRENZE

2.0

Italian light experience



MASCA

FIRENZE

“Esiste il desiderio di fermare un’emozione per poterla vivere ancora e dividerla con altri”. Ecco che il disegno ferma l’idea, la materia diventa forma, la luce la fa vivere.

Il brand Masca, garanzia di puro Made in Italy, racchiude in sé l’ispirazione dell’artista, la flessibilità dell’artigiano ed il gusto del designer.

I nostri oggetti sono concepiti con spirito innovativo fondendo stili, decori e contaminazioni di culture diverse.

Illuminare con una creazione di Masca significa, quindi, avere il coraggio di inserire un elemento di forte impatto artistico che trasforma un semplice ambiente in uno spazio estetico.

Significa avere il **coraggio della bellezza**.

“There is a desire to capture an emotion in order to experience it longer and share it with others”. Here the design captures the idea, substance takes shape, and light gives life.

The Masca brand, with its Made in Italy guarantee, encompasses the inspiration of the artist, the pliability of the artisan, and the taste of the designer.

Our products have been designed with the spirit of innovation combining style, decoration and a fusion of cultures.

Lighting your space with a Masca creation means having the courage to install a product with a strong artistic impact which transforms a simple ambient into an aesthetic space.

*It means having the **braveness of beauty**.*

«Существует желание сохранить эмоцию, что бы пережить ее еще раз и разделить с другими». Вот, что делает чертеж, он сохраняет идею, а материя приобретает форму, которую оживляет свет.

Бренд Masca – это гарантия настоящего «Made in Italy», который воплощает в себе вдохновение творца, универсальность ремесленного искусства и вкус дизайнера.

Наши объекты создаются в духе инноваций, смешения стилей, декора и влияния разных культур.

Осветить пространство творениями Masca означает иметь храбрость внедрить в интерьер элемент, несущий сильный творческий посыл, который превращает обыденность в эстетическое пространство.

Это означает обладать **храбростью красоты**.

Leonardo Scagli
President Masca s.r.l.



FOULARD
pag. 6



LIBERTY
pag. 16



VISION
pag. 28



DECO
pag. 38



Braveness of *Beauty*



FOULARD
designer
Alberto Scagli



1876/12 FOULARD Oro moka
Ø cm 105x105 h
12 x max 60W E14



1876/6 FOULARD Oro moka
Ø cm 82x82 h
6 x max 60W E14



← 1876/A2 FOULARD Oro moka
h cm 71x52x30
2 x max 60W E14



← 1876/A5 FOULARD Oro moka
h cm 91x75x43
5 x max 60W E14



LIBERTY
designer
Arch. Leonardo Scagli



↑ 1875/10 LIBERTY Oro cannella
Ø cm 105x70 h
10 x max 60W E14



→ 1875/6 LIBERTY Argento moka
Ø cm 85x63 h
6 x max 60W E14



← **1875/8PL LIBERTY Oro cannella**
Ø cm 110x60 h
8 x max 60W E14



↑ **1875/6 LIBERTY Oro cannella**
 Ø cm 85x63 h
 6 x max 40W E14



→ **1875/A2 LIBERTY Oro cannella**
 h cm 63x70x30
 2 x max 60W E14



← 1875/A2 LIBERTY Argento moka
h cm 63x70x30
2 x max 60W E14



VISION

designer
Arch. Leonardo Scagli



1877/4 VISION Argento patinato
Ø cm 60x35 h
Hal 4 x max 100W E27



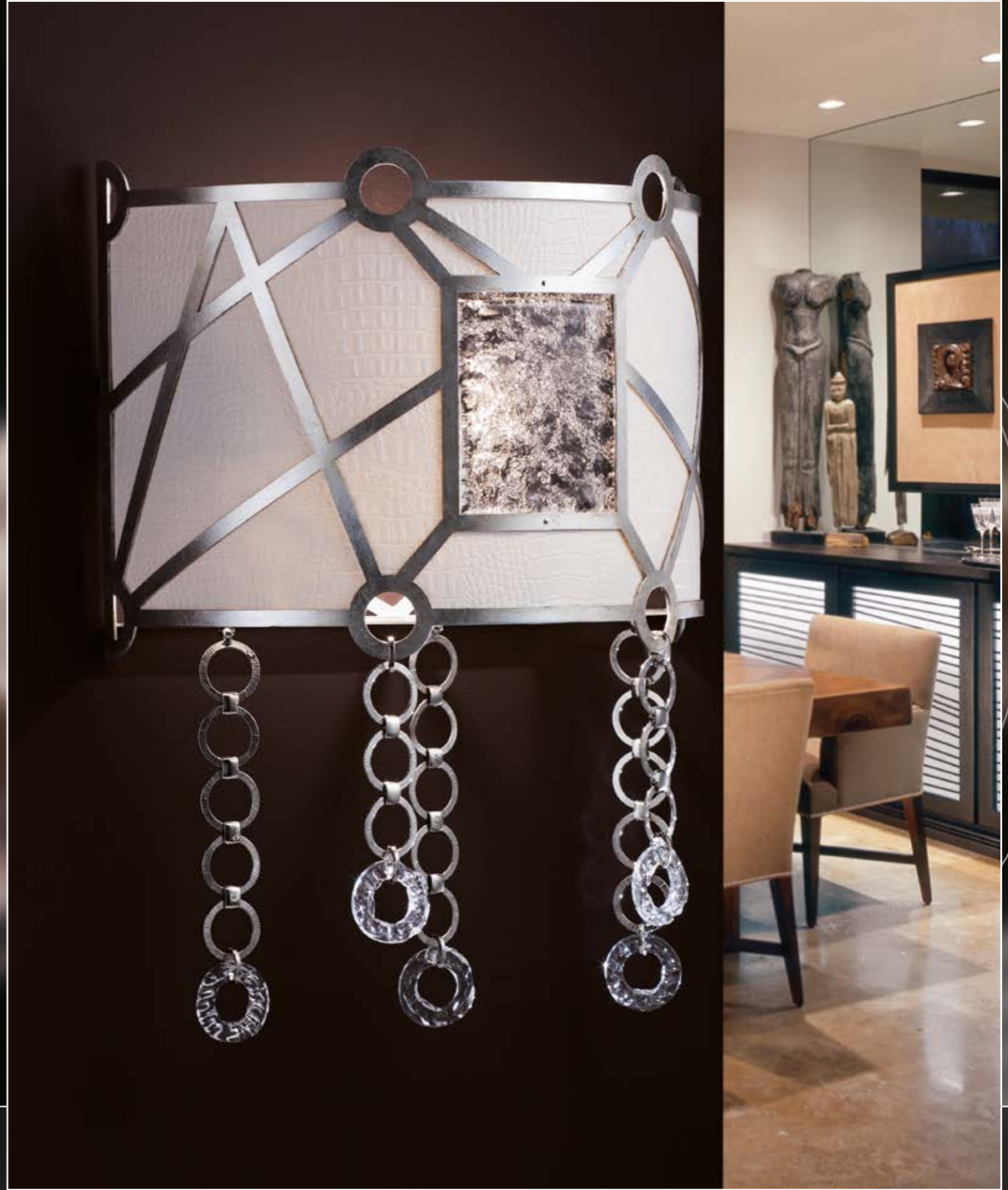
1877/8 VISION Argento patinato
Ø cm 90x65 h
Hal 8 x max 100W E27



← 1877/A1 VISION Argento patinato
h cm 30x41x19
Hal max 150W R7s



→ 1877/A1 VISION Argento patinato
h cm 30x41x19
Hal max 150W R7s





DECO
designer
Arch. Leonardo Scagli



1878/10 DECO Bianco oro
Ø cm 105x70 h
10 x max 60W E14



← **1878/6 DECO Piombo argento**
 Ø cm 85x63 h
 6 x max 60W E14



↑ **1878/A2 DECO Piombo argento**
 h cm 63x70x30
 2 x max 60W E14



↑ **1878/A2 DECO Bianco oro**
h cm 63x70x30
2 x max 60W E14



→ **1878/6 DECO Bianco oro**
Ø cm 85x63 h
6 x max 60W E14





Targhetta di garanzia Masca
Masca warranty label

Indice

Nelle pagine seguenti sono elencati tutti i prodotti presenti nel catalogo **“Bravness of Beauty 2.0”** ordinati per codice di articolo. Nella descrizione viene indicata la tipologia di articolo e i componenti utilizzati.

Tutti gli articoli possono essere realizzati in finiture diverse da quelle suggerite facendone richiesta all’azienda.

Ogni prodotto può essere personalizzato, sia nelle dimensioni che nelle caratteristiche illuminotecniche. Inoltre il nostro project department è in grado di sviluppare prodotti su specifiche indicazioni del cliente.

Su ogni creazione Masca viene applicata un’apposita targhetta con il marchio Masca che ne garantisce l’originalità.

Ogni prodotto è interamente fabbricato a mano. Le eventuali piccole diversità che si possono riscontrare sono la garanzia che ciascun articolo viene fatto in maniera artigianale, rendendolo un pezzo unico. Masca si riserva di apportare modifiche e/o migliorie a parti o accessori che non alterino sostanzialmente le forme e le caratteristiche estetiche degli articoli presentati nel catalogo.

Index

The following pages provide a list of all the products of the **“Bravness of Beauty 2.0”** catalogue range, in order of item number. There is a description of the product type and the components used. By request, all the items can be made with a variety of fixtures from those suggested.

Each product can be customized both in terms of dimensions and technical characteristics.

Our project department can also develop products to meet specific customer requirements.

Each Masca product is labelled with the Masca brand which guarantees its authenticity.

Masca products are entirely hand made. The small differences that may be observed are a guarantee that each article has been crafted by hand to achieve a unique product.

Masca reserves the right to change and/or improve parts or accessories without substantially altering the shape and the aesthetic characteristics of the products presented in the catalogue.



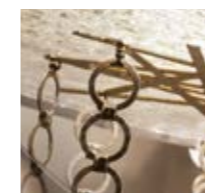
LIBERTY

Article	Page	Description	Components/feautres	Suggested finishing
1875/6	21 - 24	6 light chandelier	Murano glass arms - Schöler crystal bobeches - Swarovski crystal pendants - Conic lampshades in brown chiffon outside and ivory inside edged by brown velvet and Swarovski strass	Argento moka - Oro cannella
1875/8PL	22	8 light ceiling lamp	Murano glass arms - Schöler crystal bobeches - Swarovski crystal pendants - Conic lampshade in brown chiffon outside and ivory inside edged by brown velvet and Swarovski strass	Argento moka - Oro cannella
1875/10	18	10 light chandelier	Murano glass arms - Schöler crystal bobeches - Swarovski crystal pendants - Conic lampshades in brown chiffon outside and ivory inside edged by brown velvet and Swarovski strass	Argento moka - Oro cannella
1875/A2	25 - 26	2 light wall bracket	Murano glass arms - Schöler crystal bobeches - Swarovski crystal pendants - Conic lampshades in brown chiffon outside and ivory inside edged by brown velvet and Swarovski strass	Argento moka - Oro cannella



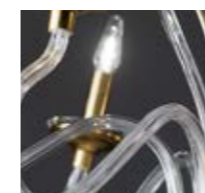
FOULARD

Article	Page	Description	Components/feautres	Suggested finishing
1876/6	10	6 light chandelier	Bobeches in Murano glass, wood and Swarovski strass - Ivory organza lampshades edged by brown satin - Asfour crystal chains - Schöler pendants with nichel frame	Oro moka
1876/12	9	12 light chandelier	Bobeches in Murano glass, wood and Swarovski strass - Ivory organza lampshades edged by brown satin - Asfour crystal chains - Schöler pendants with nichel frame	Oro moka
1876/A2	12	2 light wall bracket	Bobeches in Murano glass, wood and Swarovski strass - Ivory organza lampshades edged by brown satin - Asfour crystal chains - Schöler pendants with nichel frame	Oro moka
1876/A5	14	5 light wall bracket	Bobeches in Murano glass, wood and Swarovski strass - Ivory organza lampshades edged by brown satin - Asfour crystal chains - Schöler pendants with nichel frame	Oro moka



VISION

Article	Page	Description	Components/feautres	Suggested finishing
1877/4	31	4 light suspension	Murano glass - leather lampshade	Argento patinato
1877/8	32	8 light suspension	Murano glass - leather lampshades	Argento patinato
1877/A1	34 - 37	1 light wall bracket	Murano glass - leather lampshade	Argento patinato



DECO

Article	Page	Description	Components/feautres	Suggested finishing
1878/6	42 - 45	6 light chandelier	Murano glass arms - Schöler crystal bobeches	Bianco oro - Piombo argento
1878/10	41	10 light chandelier	Murano glass arms - Schöler crystal bobeches	Bianco oro - Piombo argento
1878/A2	43 - 44	2 light wall bracket	Murano glass arms - Schöler crystal bobeches	Bianco oro - Piombo argento

GRAPHIC DESIGN
STUDIO BENVENUTI - FIRENZE

PHOTOGRAPHY
COM & MEDIA – SCANDICCI

PRINTED ON APRIL 2014 BY
FEDERIGHI COLORGRAFICHE - CERTALDO

ACKNOWLEDGEMENTS
KEOMA SALOTTI – MATERA



MASCA

FIRENZE

All our production complies with community directives on:

“low voltage”(2006/95/CE)

CEI EN 60598-1 VIII edizione

CEI EN 60598-1/A1: 2007

CEI EN 60598-2-1 II edizione

CEI EN 60598-2-4 IV edizione

“electromagnetic compatibility”(EMC 2004/108/CE)

CEI EN 55015 V ed.var. A1 e A2

CEI EN 61000-3-2 IV ed.

CEI EN 61000-3-3 I ed. var. A1

CEI EN 61000-4-2 I ed. var. A1 e A2

CEI EN 61000-4-4 II ed.

CEI EN 61000-4-5 II ed.

CEI EN 61000-4-6 I ed. var. A1

CEI EN 61000-4-3 III ed.

CEI EN 61000-4-11 II ed.

CEI EN 61547 I ed. var. A1

RHOS 2002/95 RAE 2002/96.

GOST-R
GOST-UA



MASCA

FIRENZE

Masca s.r.l.

Showroom and Laboratories

Via Pistoiese, 1 - 50013 San Donnino (Florence) - ITALY

Tel. +39 055.8999155 +39 055.8961839

Fax +39 055.8998565

Web site: www.masca.it

Mail address: masca@masca.it